

BEATLES CONCERTO GROSSO I.

Variácie vo forme concerta grossa

She loves you

A tempo giusto ♩ = 96 IIII 9/10

Peter Breiner

Lady madonna

vl. c.

Allegro ♩ = 120 MM 4/8

5 *f*

p 10

f

15 *tr*
(*)

20

25 *pp*

30

35 *f* *p*

(b)

40



f.

45



50



f



55



p



f

60

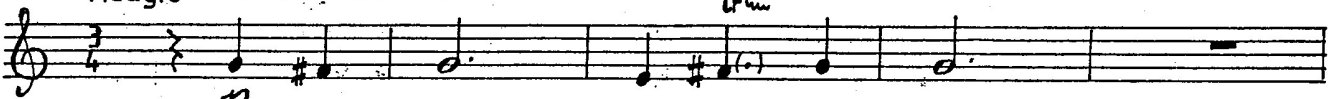
con poco meno mosso



Fool ow the hill

Adagio ♩ = 66 IIII 9/11

truu



p

7



13



19



tr

25

31

37

4 = 4 4 4

5

Honey pie

Allegro $\text{♩} = 120$ 4/8

f

5

10

15

ff

mp

20

pp.

crescendo

25

30 *f*

35

40 *f* *f*

45 *f*

51

55

f

rit.

Detailed description: This is a page of musical notation for Violin C, consisting of ten staves. The music is written in treble clef with a key signature of one sharp (F#). The score begins at measure 20 with a triplet of eighth notes and a dynamic marking of *pp.*. A *crescendo* marking spans from measure 25 to 30, where the dynamic reaches *f*. The piece continues with various rhythmic patterns, including sixteenth-note runs and eighth-note figures. Measure 40 features a double bar line and a repeat sign, with *f* dynamics on both sides. The score concludes at measure 55 with a *rit.* (ritardando) marking.

Penny lane

Allegro $\text{♩} = 80$ 4/6

The musical score for Violin C, titled "Penny Lane" by The Beatles, is presented in ten staves. The piece is in 4/6 time and marked Allegro with a tempo of quarter note = 80. The score begins with a forte (*f*) dynamic. Measure numbers 5, 10, 15, 20, 25, and 30 are indicated in boxes. The music features a variety of rhythmic patterns, including eighth and sixteenth notes, and rests. A trill (*trm*) is marked at the end of the piece in measure 30.

f

35

40

45

50

55

p

crescendo

60

f

65

1.

2.