

BEATLES CONCERTO GROSSO I.

Variácie vo forme koncerta grossa

She loves you

Peter Breiner

A tempo giusto ♩ = 96 IIII 9/10

5 *f*

10

15 *cresc.*

20 *f*

25

30

35 *pizz.* *arco* *pizz.* *arco* *pizz.*

40 *arco* *non cresc.* *f*

Lady madonna

Allegro ♩ = 120 MM 4/8

First musical staff in bass clef, 4/8 time signature. It begins with a dynamic marking of *f* (forte). The melody consists of eighth notes and quarter notes.

Second musical staff in bass clef, 4/8 time signature. It begins with a dynamic marking of *p* (piano). A measure rest is present at the start. A box containing the number 5 is positioned above the staff.

Third musical staff in bass clef, 4/8 time signature. It begins with a dynamic marking of *f* (forte). A measure rest is present at the start. A box containing the number 10 is positioned above the staff.

Fourth musical staff in bass clef, 4/8 time signature. The melody continues with eighth and quarter notes.

Fifth musical staff in bass clef, 4/8 time signature. A box containing the number 15 is positioned above the staff.

Sixth musical staff in bass clef, 4/8 time signature. The melody continues with eighth and quarter notes.

Seventh musical staff in bass clef, 4/8 time signature. A box containing the number 20 is positioned above the staff.

Eighth musical staff in bass clef, 4/8 time signature. A box containing the number 25 is positioned above the staff. The dynamic marking *pp* (pianissimo) is placed below the staff.

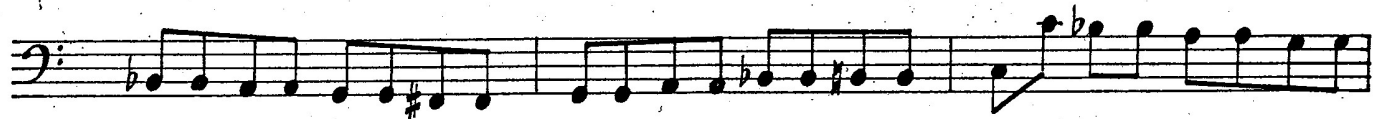
Ninth musical staff in bass clef, 4/8 time signature. The melody continues with eighth and quarter notes.

Tenth musical staff in bass clef, 4/8 time signature. A box containing the number 30 is positioned above the staff.

Eleventh musical staff in bass clef, 4/8 time signature. It begins with a dynamic marking of *f* (forte). A box containing the number 35 is positioned above the staff. The dynamic marking *p* (piano) is placed below the staff.



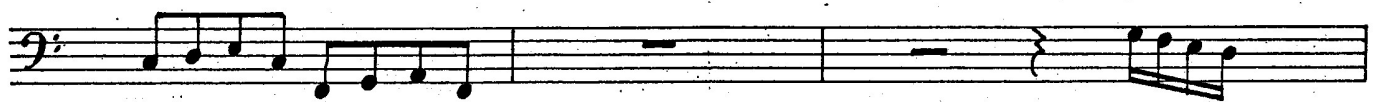
40



45



50



55



p

2



60

f



con poco meno mosso

Fool on the hill

Adagio $\text{♩} = 66$ 1111 9/11

First staff of music, bass clef, 9/11 time signature. Starts with a *p* dynamic marking.

Second staff of music, starting at measure 7.

Third staff of music, starting at measure 13.

Fourth staff of music, starting at measure 19. Includes *tr* (trill) markings.

Fifth staff of music, starting at measure 25. Includes a *pizz.* (pizzicato) marking.

Sixth staff of music, continuing the pizzicato section.

Seventh staff of music, starting at measure 31. Includes an *arco* (arco) marking.

Eighth staff of music, starting at measure 37.

Ninth staff of music, starting at measure 39. Includes a tempo change to $\text{♩} = 414$.

Tenth staff of music, starting at measure 42.

Eleventh staff of music, concluding the piece with a double bar line.

Honey pie

Allegro $\text{♩} = 120$ $\frac{4}{8}$

4 5 4 soli 10

f

15 *basso solo*
pizz.
mp

20 *tutti arco*
pp

25 *crescendo*
f

30

35 *gliss*

40 *f*

45 *pizz.*
p *arco*

51 *f* *p* 55

60 *rit.*

Penny lane

Vcl.

Allegro $\text{♩} = 80$ 4/6

The musical score for 'Penny lane' is written for Violin in 4/6 time with an Allegro tempo of 80 beats per minute. The piece starts with a forte (*f*) dynamic. The notation includes various rhythmic patterns, slurs, and dynamic markings such as piano (*p*) and forte (*f*). Measure numbers are boxed and placed above the staff lines. The score ends with two alternative endings, labeled 1 and 2.